



Goolgowi Public School

To the Stars



Newsletter Term 4, Week 7

Principal: Mrs Anne-Maree Young

Penney Street, Goolgowi, NSW, 2652 **T** 02 6965 1207 **F** 02 6965 1309 **E** goolgowi-p.school@det.nsw.edu.au

Calendar

*Please note dates from week to week as there are occasionally some changes.

Term 4, 2021

Week 7

Tues. 16 November	Mobile Library
-------------------	----------------

Week 8

Thurs. 25 November	MRHS Orientation – Full Day
--------------------	-----------------------------

Week 9

Tues. 30 November	Swimming Lessons
Thurs. 2 December	Swimming Lessons

Notes coming home this week

Nil

Canteen

Lunch specials

Penne Bolognese \$5.00

3 x party pies, 2 x sausage rolls \$5.00

Lunch orders are due on **Wednesday**.



Elizabeth Domjahn

For being a keen learner who conscientiously applies herself to all tasks.

Principal's Message

Resilience - Respect – Responsibility

Remembrance Day

Last Thursday students commemorated Remembrance Day with a ceremony around the flagpole. They laid poppies to remember all Australians who serviced and died in war. It was an important time to remember the words from the Pledge of Remembrance:

When you went away to battle, you were proud as proud can be,

And you did it for your country, yes, you flew the flag for me.

Now we live our life with freedom when we work and when we play,

For that, my heart says 'Thank you' on this very special day.



Upcoming School Events

Under the present COVID-19 guidelines, the school is unable to have our Presentation Night in our normal format as there are restrictions on who can attend. We have decided to have a virtual Presentation and parents will receive a digital copy.

The Year 6 farewell will be held at the Ex-Servicemen's Club on the 14 December and as it is a school event, all parents attending must be fully vaccinated.

Our annual swimming lessons with Blackline Swimming will go ahead, beginning on the 30 November.

New Library Furniture

The final items of library furniture arrived on the weekend: six colourful book boxes and shelving. Mrs Furner has been busy culling and rearranging the books to provide easier access for students. When the library is reorganised, it will provide a more functional and flexible learning space for students.

COVID-19 Guidelines

Updated Level 3 guidelines began on 8 November:

- All staff on school sites must be fully vaccinated.
- All parents and carers, volunteers and providers who are permitted to come onto school sites must be fully vaccinated.
- Masks are required indoors for all staff, visitors and students in Year 7 or above, and strongly recommended indoors for primary students.
- All staff and visitors must check in when attending a school site or gathering.
- Schools must maintain attendance records of all gatherings.
- Maintain 1.5 metres physical distancing wherever practicable.
- Teaching and learning in indoor spaces will be well ventilated and as large as possible for the number of participants.
- Fully vaccinated parents and carers will be allowed on site to support curriculum delivery, vulnerable students or students with disability, student wellbeing activities and school operations (for example reading support, canteens and uniform shops). Parents and carers must check in using the school check-in, show proof of vaccination on entry to the school site and follow mask-wearing requirements.
- Parents and carers must follow their school's advice regarding student drop-off and pick-up, which will require parents to remain off school sites at these times. This includes staying in the car when dropping off and picking up children if it is safe to do so. Drop-off and pick-up will continue at the Penney St entrance.
- Parents and carers should follow the physical distancing advice for their local area and avoid gathering outside of school gates.
- Assemblies and presentations will be allowed outdoors on site. Cohorts will be separated with physical distancing in place where practicable. Fully vaccinated visitors (including parents and carers) are only allowed to attend if completing a specific role (such as presenting) and at the invitation of the school. All visitors must check in using the school check-in and show proof of vaccination.
- Excursions will be allowed outdoors and indoors. If the excursion is indoors, the cohort will need to have sole use of the venue.
- School photos are allowed outdoors on school sites. Providers supporting school photos must be fully vaccinated and sign in using the school check-in app. Only individual photos and sibling photos are permitted (no class or team photos due to physical distancing requirements).

Parent Satisfaction Survey

Thank you to the ten parents who have responded to our survey. This survey is an important tool in our planning. Last year we had over half the families respond and it would be great to get an ever better result this year.

Parents received the link last week in an email. Please take the time to complete the survey.

Anne-Maree Young

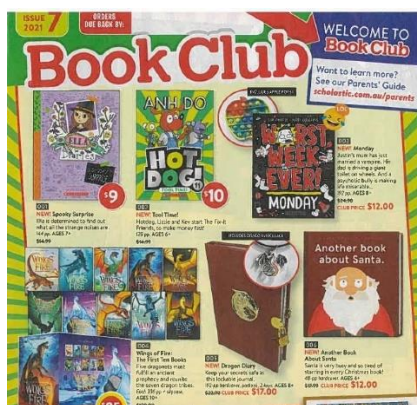
Principal

Parent/Carer Contact Details

It is very important that the school has up to date contact details for parents and carers. In the event of an emergency or a positive COVID case, the school community will need to be advised as a matter of urgency. It is essential that the school is provided with your current phone number, email and address. Please contact the school office to check if your details are up to date.

Thank you.

Book Club



The final book club for the year is due on **Wednesday 24 November**.

what's happening in the classrooms?

K/1/2 News

In science, students designed and made games such as indoor hockey and egg and spoon race that used push and pull forces. Every group had a chance to play all the games and this week we will evaluate them.



objects. K/1/2 enjoyed cutting a chocolate cake into halves and then quarters. A student also described that the cake would have to be cut into fourteenths to share equally with the whole class. We all enjoyed eating the cake and describing what we had done using mathematical language.



What is a half and what is a quarter?

This week students are looking at halves and quarters of a whole object and groups of

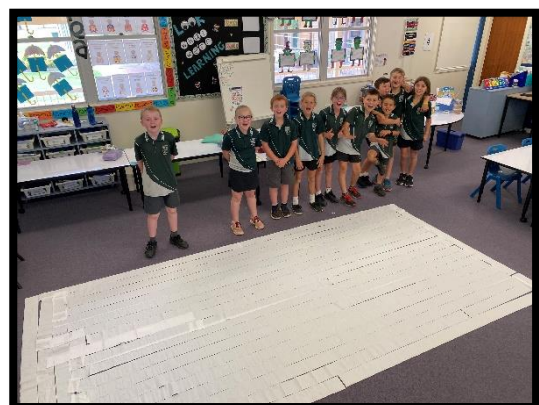


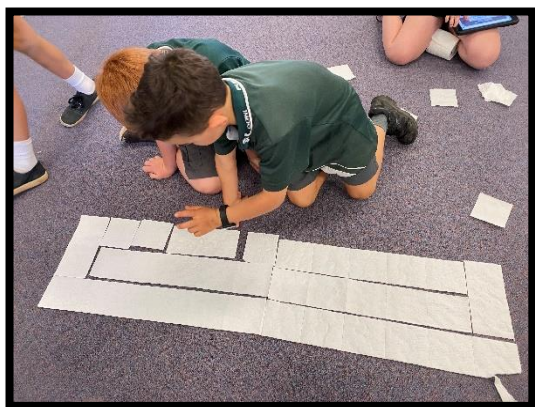
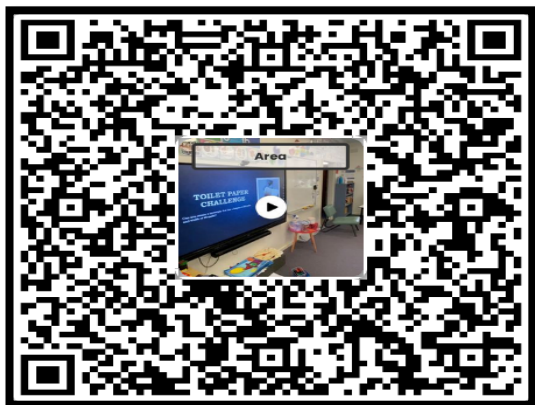
Miss Gordon/Mrs Young

3/4 News

Toilet Paper Area

Last week, students continued to develop their understanding of area by using toilet paper sheets. Students were split into groups and had to solve area questions using their toilet paper rolls. They had a great time using toilet paper for a 'different' reason. To finish off the lesson, students worked collaboratively to solve a large area maths question using multiple rolls of toilet paper.





Mr Bourne

Weekly Awards

Congratulations to our weekly award winners:

Miss Gordon/Mrs Young

- **Elizabeth** – for displaying a positive attitude and applying herself to all assessment tasks.
- **Amia** – for great improvement in her reading.

Mr Bourne

- **Lochie** – for striving to achieve his learning goals during morning literacy activities.
- **Tyler** – for making positive attempts to apply feedback during literacy sessions.

Mrs Liddicoat

- **Lexie** – for fantastic use of expression and fluency when reading *Bridge to Terabithia*.
- **Jewel** - for displaying a great interest in the text, *Bridge to Terabithia*.



PBL Awards

Canteen Voucher – Annalee

PBL (Positive Behaviour for Learning)

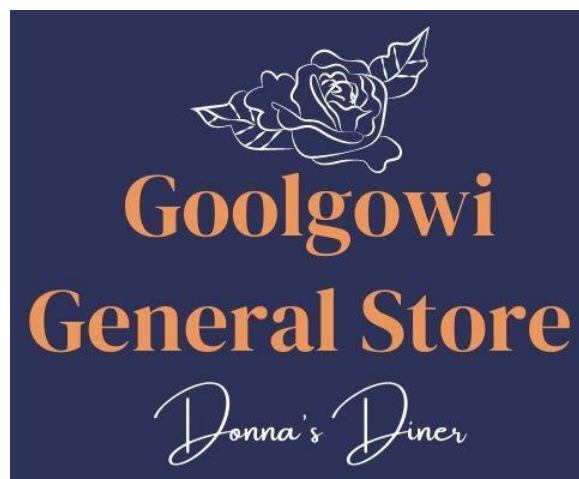
Values: Respect, Responsibility, Resilience

PBL focus for this week: Respect

Focus: Use kind words, kind actions.

Action: Keep your hands and feet to yourself.

Community News



Now open 7 days up until Christmas

With longer trading hours

Throughout harvest

Phone: 0478 540 111

Goolgowi Exies News

The club is open!

Exies Opening Hours

Monday to Wednesday CLOSED

Thursday & Friday 4.30pm

Saturday4.00 pm

Sunday3.30pm

Goolgowi Club Bistro

Thursday & Friday full menu and weekly specials.

Don't forget if you can't come in, support the club and buy take away.

Thursday Nights are club nights again.

Super draw is back and it could be you winning **\$20,400.00**.

The draw takes place anytime between 7:00pm and 9:00pm. You must be a current member and on the premises at the time of the draw.

Meat Raffles - from Hanwood Butchers.

\$2 lucky wheel spin.

Saturday happy hour 5.00pm-7.00pm

Cooked chook raffles

Lucky poker draw

Come down and support your club and have some fun!

Grain Donation

This harvest if you deliver to the Emerald Grain or GrainCorp sites would you please consider making a small grain donation to the Goolgowi Ex-Servicemen's Club?

We have Delivery Cards at both sites and your generous donation would be greatly appreciated.

Here's to a wonderfully productive, safe and happy harvest for everyone.

Wanted

If anyone has Christmas decorations they no longer use, please donate them to the club so we can decorate in style this year.

Tickets can now be bought for the great Christmas raffle and for the ham raffles.

Grants Received

The club has been fortunate to receive two grants:

- to replace some LED lights to make the club brighter and cheaper to run.
- to have the club painted.

AGM - 11 December

Think seriously about becoming a committee member. (Date changed)



GUNBAR CHRISTMAS TREE
Monday 13th December 2021
GUNBAR COMMUNITY HALL
6PM START

SANTA CLAUS arrives at 7.30pm

Major Raffle Prizes 100 Club Draw

BBQ FOOD & COLD DRINKS available – BYO CHAIR & ESKY

To add your children to Santa's List to receive a gift (\$15) please text
Kart Harvey 0499 652 333 by 6th December 2021

Proudly supporting 'Goolgowi Suicide Prevention'

 Follow us on Facebook 'Gunbar Christmas Tree'



Joss^o
Facility Management

CLEANERS WANTED

Applicants need to be available to work
Monday to Friday between the hours
5:00am-7:00pm.

- Split shifts: 5:00am-9:00am and 2:00pm-7:00pm
- Day shift available from 11:00am-3:00pm

careers@jossgroup.com.au
www.jossgroup.com.au

The position is for relief cleaning in the middle of the day for two hours/day.



Goolgowi Branch of CWA

Monthly meeting

Thursday 18th November 2021

1pm start in CWA rooms.

New members and visitors welcome.

Come for a chat and catch up.

Don't forget your mask!

CORRUGATED IRON SCULPTURES
0428 476 826
Kim Gibbs
www.allthingsart.com.au

SKY CROPPERS
AERIAL APPLICATORS
ABN 30 577 590 208
AAAA OPERATION SPRAY SAFE APPROVED

GERARD HIGGINS
CHIEF PILOT-PROPRIETOR

(02) 6964 1919 24 Hours UHF 19
P.O. Box 761, Griffith, NSW, 2680 - Fax: (02) 6964 1929

Newsletter Sponsors

Robertson Bus Service

C & J ROBERTSON PTY LTD

'SERVING THE COMMUNITY WITH COMMITMENT'

Ph: 0437 704 213 / 0488 551 375

Depot: 6964 4922

B & C Robertson Engineering

Bradys Road

GOOLGOWI NSW 2652

Mobile: 0427.651.417



Multara Earthmoving
FOR ALL YOUR EXCAVATION NEEDS
Contact Mick Armstrong
0427 483 870

Goolgowi Motor Inn

Mid Western Highway, Goolgowi NSW 2652
Ph: 02 6965 1138 • Fax: 02 6965 1139
Email: goolgowimotorinn@bigpond.com
www.goolgowimotorinn.com

Thank you to all our community businesses who support our school newsletter. We really appreciate your support.

If you have any community announcements or wish to advertise through our school/community newsletter please contact Jane by phone or email by Monday afternoon.

Our newsletter is published on Tuesday.

Proudly Supporting Police in Local District

IAN ROSS CONTRACTING
Contractors License Number 66413C
Bricklaying, Maintenance, Insurance Work, Steel Frame Sheds
Servicing 200kms from Goolgowi (NSW)
Bus Charter Hire - 2 x 24 seater buses. Accreditation no. 43198
Ian 0428 401 247 • Jacqui 0427 685 846 • 02 6965 1347
Email: jacquineross@bigpond.com

Year 2/3/4/5/6

Tuesday - WEEK 6

Orientation Lesson



First up, we all had a go at playing the Boomwhackers.



Boomwhackers are tuned percussion musical instruments and are great fun to play.



Next, we learnt about the viscosity of different liquids as part of our volcano unit. We found that mustard has a much higher viscosity than dishwashing liquid.



Finally, we said goodbye to Rylan who is moving from Goolgowi. All the students left special messages on his shirt.

