



Goolgowi Public School

To the Stars



Newsletter Term 4, Week 8

Principal: Mrs Anne-Maree Young

Penney Street, Goolgowi, NSW, 2652 **T** 02 6965 1207 **F** 02 6965 1309 **E** goolgowi-p.school@det.nsw.edu.au

Calendar

*Please note dates from week to week as there are occasionally some changes.

Term 4, 2022

Week 8

Tues. 29 November	Swimming Lessons
Wed. 30 November	Swimming Lessons
Thurs. 1 December	Swimming Lessons
Fri. 2 December	Japanese Drumming

Week 9

Tues. 6 December	Swimming Lessons
Wed. 7 December	Swimming Lessons
Thurs. 8 December	Swimming Lessons

Week 10

Tues. 13 December	Mobile Library
	Year 6 Farewell
Wed. 14 December	Presentation Night
Fri. 16 December	Pool Party

Term 1, 2023

Week 1

Fri. 3 February	SDD
-----------------	-----

Week 2

Mon. 6 February	SDD
Tues. 7 February	Students 1-6 Return
Wed. 8 February	Kinder students start
Fri. 10 February	Swimming Carnival

Notes coming home this week

- Nil

Student of the Month



Tyler Young

For consistently applying himself to achieve impressive results in learning.

Principal's Message

Resilience - Respect – Responsibility

Borambola Excursion

Some very tired students stumbled off the bus on Wednesday afternoon; the excitement and activities at Borambola definitely wore them out. It is the first time since 2019 that students have been able to experience an overnight excursion. From everyone I asked, BMX riding was a favourite. Thank you to Miss Wheeler and Mrs Liddicoat for supporting and supervising the students on the excursion.



Swimming Lessons

Our annual swimming lessons began today with Black Line swimming instructors. There will be further lessons on Wednesday, 30 November, Thursday 1 December, Tuesday 6 December, Wednesday 7 December and Thursday 8 December. Students must ensure that they have all the necessary items to participate: swimmers, swim shirt, hat, towel, sunscreen and goggles all in a suitable bag for carrying wet clothes. Please ensure that all items are clearly named. Thongs can be worn to and from the pool. Participation is essential unless students have a medical note explaining why they can't participate. The cost of the lessons is nil as it is covered by the school and the Premier's Sporting Challenge grant.

Parent Satisfaction Survey

Thank you to the twelve parents who responded to the survey. From the results of the survey, I spoke at the last P&C meeting, outlining the school's supportive welfare programs as this was an area that needed clarifying. These programs are more than access to a school counsellor and engaging with outside agencies when needed. Positive Behaviour for Learning is the overarching program the school used to enable students to connect, succeed and thrive and staff work to provide safe learning and teaching environments to encourage healthy, happy, successful and productive students. We also have leadership opportunities, anti-bullying, healthy eating, fitness, cybersafety and STEAM programs that allow students to learn and develop.

COVID-19

The school has had cases of COVID-19 amongst the students, so it is important to do a RAT test if students are displaying any symptoms. We have sent home more tests for each student. Please use them if you are unsure.

Students and staff should continue to stay home when sick.

For further advice follow the link to the Department's website:

<https://education.nsw.gov.au/covid-19/advice-for-families>

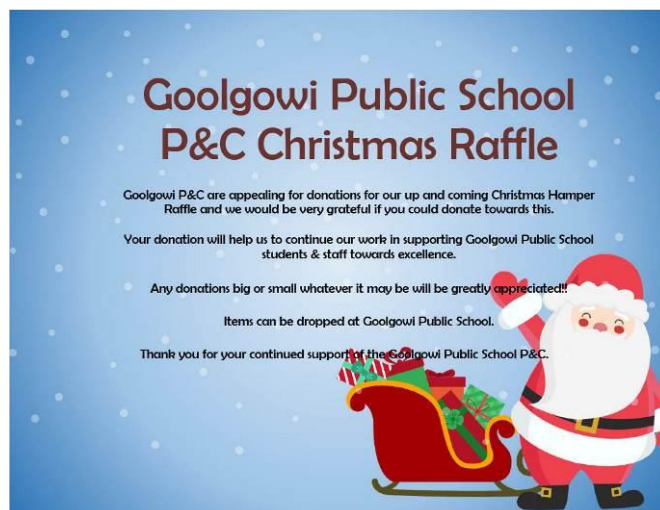
Mosquito Repellent

With all the rain, the mosquito population has thrived at school. Students are able to bring some repellent to school. It is important that they don't share it with anyone else, their name is on it and they can apply it themselves. No aerosol containers are allowed.

Anne-Maree Young
Principal

Library Books

Please return all library books on Thursday. We don't want outstanding books so have a search at home; library books hide in strange places!



what's happening in the classrooms?

3-6 News

3-6 had a wonderfully exhausting three days away at Borambola Sport & Recreation Camp. Thankfully we were not delayed with flood waters and arrived in good time. We started camp with archery and the mud run. It was a little windy but some people still managed to get a bullseye!





It was quite cold on the first day but that didn't stop them from jumping into the mud and completing the course. I think the hose down at the end would have been the worst part!



Day Two saw students completing a BMX course, kayaking, fencing and raft building. Most people said the BMX bikes were their favourite activity. There was a pump track with lots of mounds and sharp turns.



The kayaking was challenging for some but they showed resilience and persevered through the activity (being tired and exhausted might have also played a part). Once they worked out how to steer the kayak with the paddle, there was no stopping them!



Raft building allowed team work to shine through and critically thinking. Some groups had very different ways of building their rafts, but they all floated and stayed together (in the beginning anyway...).



Fencing was an interesting activity to watch, everyone was well protected and it was hard to see who was battling who. The instructor deemed Sam an 'expert' and he didn't lose any of his battles.



Our final day's activities were Indigenous games, boomerang throwing and a lovely nature walk. We jumped back on the bus and instead of everyone sleeping and being quiet, 3-6 showed off their singing abilities – who knew they had such delicate voices! Awesome time had by all, can't wait to do it again next year!



Miss Wheeler

Awards

Weekly Awards

Congratulations to our weekly award winners.

Mrs Liddicoat

- **Johnathan** – for singing the national anthem proudly.
- **Wade** – for trying his best in all learning activities.

Miss Wheeler

- **Reagan** - for showing resilience and challenging herself during school camp.
- **Thomas** - for showing resilience and challenging himself during school camp.



PBL Awards

Canteen Voucher – Wade

PBL (Positive Behaviour for Learning)

Values: Respect, Responsibility, Resilience

PBL focus for this week: Respect

Focus: Look after equipment.

Action: I look after school equipment and resources in the classroom and in the playground.

Community News



Goolgowi Exies News

Opening Hours

Monday to Wednesday CLOSED
 Thursday & Friday..... 4:30pm
 Saturday.....4:00pm
 Sunday.....3:30pm

Goolgowi Club Bistro

Thursday & Friday full menu and weekly specials.

Thursday Nights are club nights again.

Super draw this week:

\$21,600

Draw takes place anytime between 7:00pm and 9:00pm. You must be a **current** member and on the premises at the time of the draw.

Meat Raffles - from Hanwood Butchers.

\$2 lucky wheel spin.

Xmas party, corporate event/family gathering

Consider hiring the club for your next event. Private areas, airconditioned, food and drinks as requested.

Contact the club on 6965 1308.

Upcoming Events

- ❖ 16 December - Ham Raffles

Buy your tickets now at the club or online

BSB :633-000 Account :161528633

Reference Ham or Christmas and your name.

ONLY \$1.00 a ticket

- ❖ 22 December – Christmas Raffles & Kids Disco
- ❖ 31 December – Twice Shy. Rock the New Year in at the club.



Newsletter Sponsors

Robertson Bus Service

C & J ROBERTSON PTY LTD

'SERVING THE COMMUNITY WITH COMMITMENT'

Ph: 0437 704 213 / 0488 551 375

Depot: 6964 4922

Memberships due

Club memberships are now due for renewal -see Tom or Tori at the bar.

\$11.00/Pensioners \$5.50.


Renew by 31 Dec and you will be eligible for the draws in January 2023.





JOBS AUSTRALIA
ENTERPRISES LTD
Your Success - Our Vision

Kristy Warr | SWP Coordinator - Riverina
Jobs Australia Enterprises Ltd.
Labour Hire and Seasonal Worker Recruitment
Griffith, NSW, 2680
M: 0448 921 754
kristy.warr@jobsaustralia.com.au
www.jobsaustralia.com.au



Goolgowi General Store
Donna's Diner

- ✿ Delicious hot food
- ✿ Take away or dine in
- ✿ Lavazza coffee & cakes
- ✿ Sliced meats & produce
- ✿ Fresh bread & grocery
- ✿ Newspapers & giftware

Ph: 0478 540 111

Email: goolgowigeneralstore@outlook.com

FB: Goolgowi General Store - Donna's Diner

Your hosts: Emily, Amber and Geoff Hale

Proudly Supporting Police in Local District

IAN ROSS CONTRACTING

Contractors License Number 66413C

Bricklaying, Maintenance, Insurance Work, Steel Frame Sheds
Servicing 200kms from Goolgowi (NSW)

Bus Charter Hire - 2 x 24 seater buses. Accreditation no. 43198

Ian 0428 401 247 • Jacqui 0427 685 846 • 02 6965 1347

Email: jacqueline.ross@bigpond.com



Multara Earthmoving
FOR ALL YOUR EXCAVATION NEEDS
Contact Mick Armstrong
0427 483 870



Goolgowi Motor Inn

Mid Western Highway, Goolgowi NSW 2652
Ph: 02 6965 1138 • Fax: 02 6965 1139
Email: goolgowimotorinn@bigpond.com
www.goolgowimotorinn.com

Thank you to all our community businesses who support our school newsletter. We really appreciate your support.

If you have any community announcements or wish to advertise through our school/community newsletter please contact Jane by phone or email by Monday afternoon.

Our newsletter is published on Tuesday.

K/1/2 News

The K/1/2 students had a wonderful time with Mrs Robertson last week while I was away at Borambola with the 3-6 students. On Wednesday afternoon, the class did a fantastic job weeding the school vegetable garden. They pulled out some massive weeds that had gone berserk after all the rain we have had. Well done K/1/2 on doing such a terrific job tidying up the garden.

